

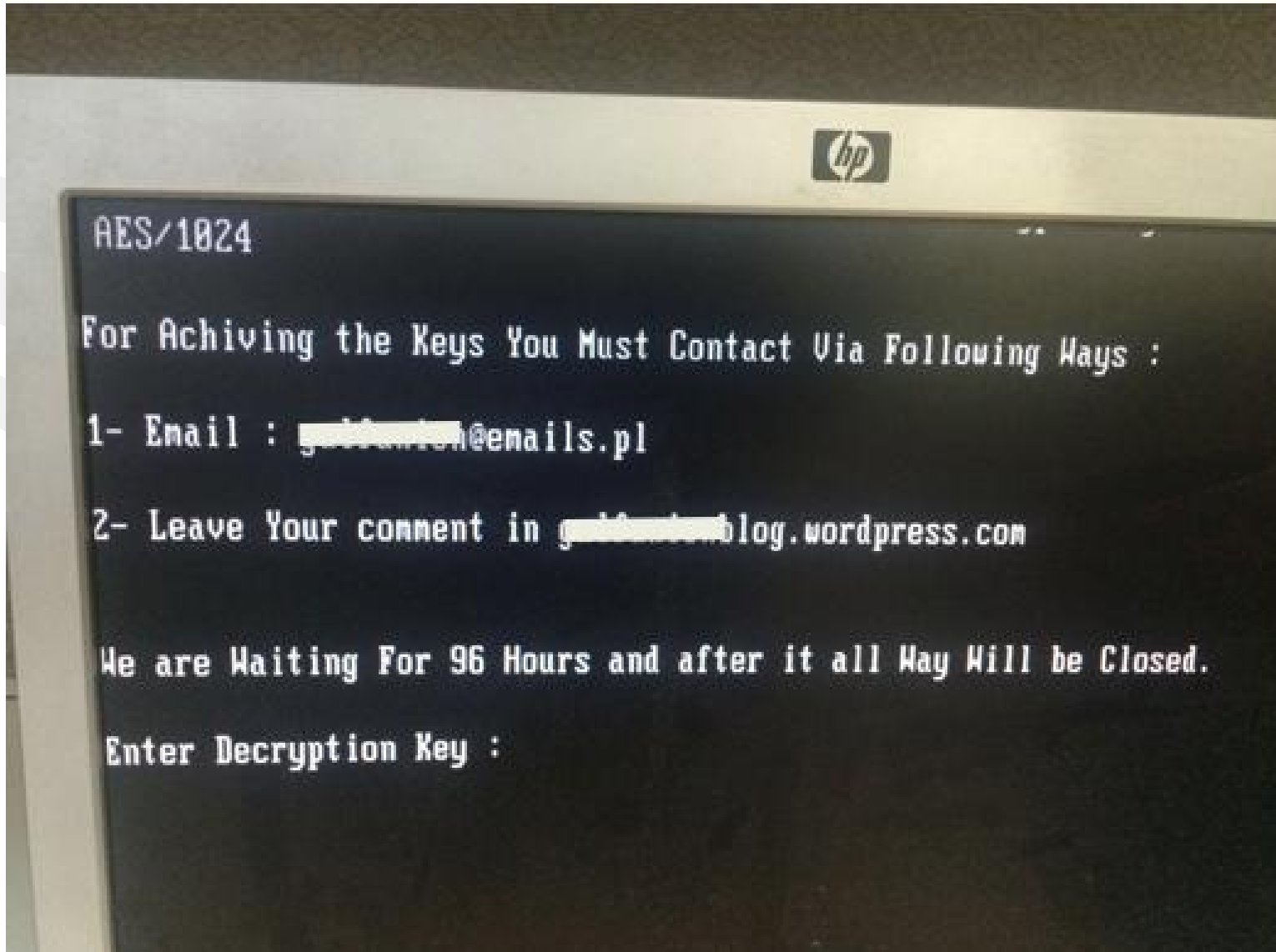
*Stride IT Consulting*

*Ransomware attack: A Real Case of a Multinational Company  
from the Gulf Region*

*Bader N. Kamal  
Managing Director*



# Ransomware Attack Scenario



# *What does ransomware attack do?*

- It prevent you from using your PC normally, and they will all ask you to do something before you can use your PC.
- It can target:
  - End-user computers
  - Endpoints in an enterprise network,
  - Servers used by a government agency or healthcare provider.
- Ransomware can:
  - Prevent you from accessing Windows.
  - Encrypt files so you can't use them.
  - Stop certain apps from running (like your web browser).

# Are we in danger!

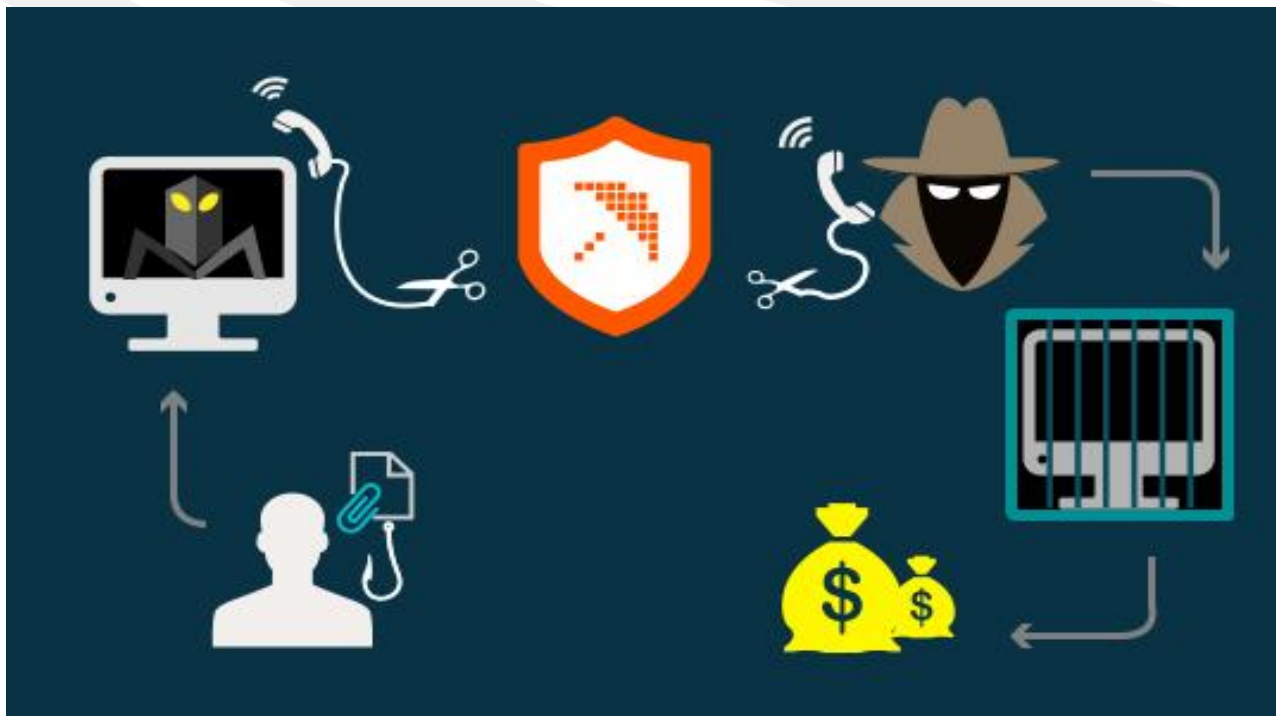
Location	1H15 Ransomware ER
1 United Arab Emirates	2.98 %
Portugal	1.48 %
Italy	1.35 %
4 Qatar	1.22 %
Senegal	0.99 %
Hungary	0.95 %
Belgium	0.82 %
Mexico	0.77 %
Switzerland	0.75 %
Latvia	0.71 %

Location	2H15 Ransomware ER
Canada	1.54 %
United States	1.24 %
Turkey	1.03 %
Portugal	1.01 %
Romania	0.92 %
6 Saudi Arabia	0.91 %
United Kingdom	0.88 %
Italy	0.84 %
Pakistan	0.83 %
Cambodia	0.82 %

\*<http://blogs.microsoft.com/microsoftsecure/2016/04/22/ransomware-understanding-the-risk/>

# *How does ransomware spread?*

- Malicious email attachments
- Drive-by downloads
- Malvertising
- Removable drives



## ***How to avoid ransomware attack?***

- Educate users on security best practices;
- Backup your files in regular bases;
- Filter malicious emails;
- Maintain up-to-date antivirus, antimalware, and operating systems;
- Implement active monitoring detection systems (IDS/IPS);
- Limit access to network shares (ex. Your backup services);
- Use Cloud Service if its allowed by your organization (ex. *OneDrive comes free with office 365*).



*Thank you*

